



Output power	250 VA
Input	660 +/-5% V AC
Output	230 V AC
Category	Line, Control circuit und Isolation transformer



Picture representative

Electrical parameters

Phases	1
Nominal power	VA 250
Short-time power	VA 850
Nominal input voltage	V AC 693-660-627
Nominal input current	A AC 0,425-0,446-0,470
Nominal output voltage	V AC 230
Nominal output current	A AC 1,087
Frequency	Hz 50...60
Short circuit voltage	% 4,83 20°C
Vector group	li0
Duty	continuous
Duty cycle	% 100
Winding material	CU
Winding losses	W 15,9
Iron losses	W 12,4
Total losses	W 28,3
Efficiency	% 89,8

Standards

Standards	EN 61558-2-1, -2-2, -2-4
-----------	--------------------------

Authorization / Certificate

Approvals	ENE (further approvals possible on customer request)
Declaration of Conformity	CE

Environmental conditions

Operating temperature	°C	-25 ... +40
Storage temperature	°C	-25 ... +55
Extended temperature range	°C	up to +80 (after power reduction according to the load characteristics)



Relative humidity (without condensation)	%	5 ... 95
Cooling		natural cooling
Installation altitude		to 1000m above sea level, higher altitude possible with power reduction
Overvoltage category	(acc. EN 61558)	OVC III
Degree of pollution	(acc. EN 61558)	P2

Installation and mounting

Type of terminals	Screw / tab connection
Mounting type	Screws / mounting rails
Mounting position	see „Dimensional drawing“ at the end of the document
Dimensions (HxWxD)	see „Dimensional drawing“ at the end of the document
Mounting dimensions	see „Dimensional drawing“ at the end of the document
Oblong hole	see „Dimensional drawing“ at the end of the document
Clearance distance	see technical information in the chapter „Further information“

Security features

Insulation class	acc. EN	class B
Protection		IP00 (other types of protection on request)
Protection class		I
Short-circuit strength		conditionally with protection

Connection table



Terminal block

Back side: 32-31
Front side: 1-2-3-4

	U_N [V AC]	I_N [A AC]	Terminals $\circ \circ$	Wiring $\overline{\circ \circ}$	Protection
PRI1	693	0,425	1 - 4	-	3RV2411-0FA10 / 0,46A (ext.)
	660	0,446	1 - 3	-	3RV2411-0FA10 / 0,49A (ext.)
	627	0,470	1 - 2	-	3RV2411-0GA10 / 0,52A (ext.)
SEC1	230	1,087	31 - 32	-	3RV2011-0KA20 / 1,1A (ext.)



NOTE protection

Protection acc. IEC 60947 | Type suggestion with Siemens circuit breaker - alternatives are possible.
Protection for the North American market acc. UL - see chapter „Further information“.

General data

GTIN / EAN	4025515516620
Country of origin	Czech Republic
Packaging unit	1
Export sign	AL: N / ECCN: N
Customs tariff number	85043180
Gross weight - brutto	kg 3,9
Net weight - netto	kg 3,7

Further information

Complete catalogue Transformers / Power Supplies / Reactors / Filters

www.mdexx.com/online-katalog

Core product range Transformers

www.mdexx.com/core-products-range-transformers

Technical information

www.mdexx.com/technische-information

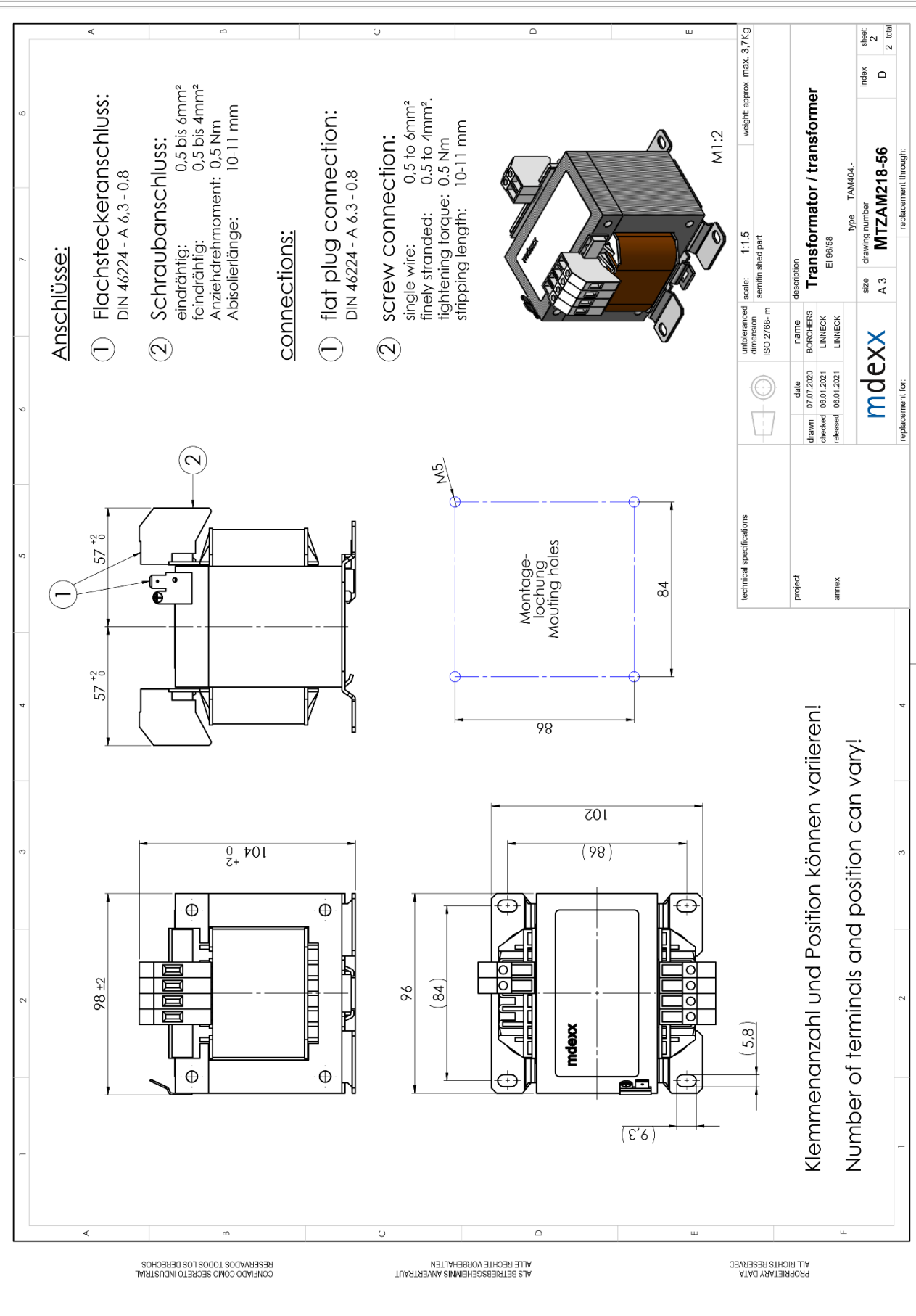
ePLAN / CAD data

www.eplandata.de/portal/en_EN/part/MDX.TAM4042-5LT10-0FA0

Service / Support

- Operating instruction [www.mdexx.com/BA_T_Transformatoren\(TAM,TAP,TAT,TAU,TBT,TBU\)](http://www.mdexx.com/BA_T_Transformatoren(TAM,TAP,TAT,TAU,TBT,TBU))
- Certificate www.mdexx.com/downloads/zertifikate
- EU Declarations of Conformity [www.mdexx.com/Transformatoren nach EN 61558\(TAM,TAN,TAP,TAT,TAU,TAW\)](http://www.mdexx.com/Transformatoren nach EN 61558(TAM,TAN,TAP,TAT,TAU,TAW))
- EAC Certifications www.mdexx.com/EAC_Transformatoren

Dimensional drawing

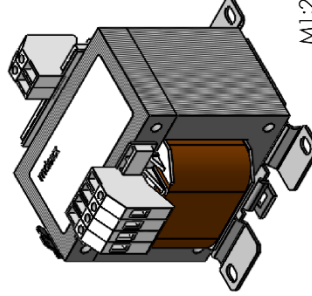


Anschlüsse:

- ① Flachsteckeranschluss:
DIN 46224 - A 6.3 - 0.8
- ② Schraubanschluss:
eindrängig: 0.5 bis 6mm²
feindrängig: 0.5 bis 4mm²
Anziehdrehmoment: 0.5 Nm
Abisolierlänge: 10-11 mm

connections:

- ① flat plug connection:
DIN 46224 - A 6.3 - 0.8
- ② screw connection:
single wire: 0.5 to 6mm²
finely stranded: 0.5 to 4mm²
tightening torque: 0.5 Nm
stripping length: 10-11 mm



technical specifications		ISO 2768 - m		unintoleranced dimension	scale: 1:1.5	weight: approx. max. 3.7Kg
project		name		description		
amex		BORCHERS		Transformer / transformer		
date		checked		EI 96/68		
07.07.2020		06.01.2021		type TAM04-		
released		released		drawing number		
06.01.2021		06.01.2021		MTZAM218-56		
size		index		sheet		
A 3		D		2		
replacement for:		replacement through:		2		
				2		

Klemmenanzahl und Position können variieren!
Number of terminals and position can vary!