



<b>Output power</b>	<b>250 VA</b>
<b>Input</b>	<b>400-230 +/-15V V AC</b>
<b>Output</b>	<b>24 V AC</b>
<b>Category</b>	<b>Line, Control circuit und Safety isolating transformer</b>



Picture representative

## Electrical parameters

Phases	1
Nominal power	VA 250
Short-time power	VA 850
Nominal input voltage	V AC 415-400-385-245-230-215
Nominal input current	A AC 0,717-0,744-0,773-1,215-1,294-1,384
Nominal output voltage	V AC 24
Nominal output current	A AC 10,4
Frequency	Hz 50...60
Short circuit voltage	% 5,77   20°C
Vector group	li0
Duty	continuous
Duty cycle	% 100
Winding material	CU
Winding losses	W 19,6
Iron losses	W 12,3
Total losses	W 31,9
Efficiency	% 89,0

## Standards

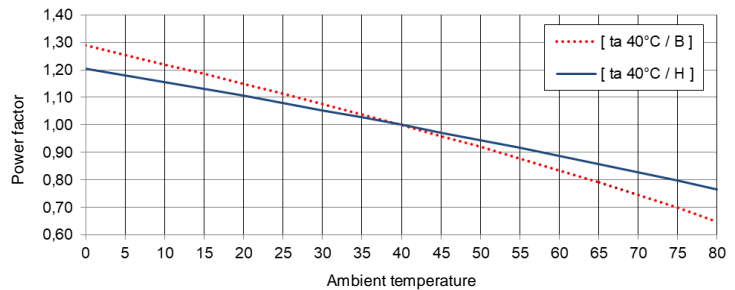
Standards	EN 61558-2-1, -2-2, -2-6 UL 5085 / XPTQ2-8.E92271
-----------	--

## Authorization / Certificate

Approvals	EAC cULus   (further approvals possible on customer request)
Declaration of Conformity	CE

## Environmental conditions

Operating temperature	°C	-25 ... +40
Storage temperature	°C	-25 ... +55
Extended temperature range	°C	up to +80 (after power reduction according to the load characteristics)



Relative humidity (without condensation)	%	5 ... 95
Cooling		natural cooling
Installation altitude		to 1000m above sea level, higher altitude possible with power reduction
Overvoltage category	(acc. EN 61558)	OVC III
Degree of pollution	(acc. EN 61558)	P2

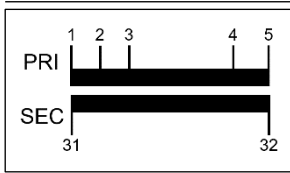
## Installation and mounting

Type of terminals	Screw / tab connection
Mounting type	Screws / mounting rails
Mounting position	see „Dimensional drawing“ at the end of the document
Dimensions (HxWxD)	see „Dimensional drawing“ at the end of the document
Mounting dimensions	see „Dimensional drawing“ at the end of the document
Oblong hole	see „Dimensional drawing“ at the end of the document
Clearance distance	see technical information in the chapter „Further information“

## Security features

Insulation class	acc. EN	class B
Insulation class	acc. UL	CLASS 130
Protection		IP00 (other types of protection on request)
Protection class		I
Short-circuit strength		conditionally with protection

## Connection table



### Terminal block

Back side: 32-31  
Front side: 1-2-3-4-5

	U <sub>N</sub> [V AC]	I <sub>N</sub> [A AC]	Terminals	Wiring	Protection
PRI1	415	0,717	1-5	-	3RV2411-0JA10 / 0,78A (ext.)
	400	0,744	2-5	-	3RV2411-0JA10 / 0,81A (ext.)
	385	0,773	3-5	-	3RV2411-0JA10 / 0,85A (ext.)
	245	1,215	1-4	-	3RV2411-1AA10 / 1,36A (ext.)
	230	1,294	2-4	-	3RV2411-1AA10 / 1,42A (ext.)
	215	1,384	3-4	-	3RV2411-1AA10 / 1,48A (ext.)
SEC1	24	10,4	31-32	-	3RV2011-1KA10 / 10,5A (ext.)



### NOTE protection

Protection acc. IEC 60947 | Type suggestion with Siemens circuit breaker - alternatives are possible.  
Protection for the North American market acc. UL - see chapter „Further information“.

## General data

GTIN / EAN	4025515516989
Country of origin	Czech Republic
Packaging unit	1
Export sign	AL: N / ECCN: N
Customs tariff number	85043180
Gross weight - brutto	kg 4,0
Net weight - netto	kg 3,8

## Further information

Complete catalogue Transformers / Power Supplies / Reactors / Filters

[www.mdexx.com/online-katalog](http://www.mdexx.com/online-katalog)

Core product range Transformers

[www.mdexx.com/core-products-range-transformers](http://www.mdexx.com/core-products-range-transformers)

Technical information

[www.mdexx.com/technische-information](http://www.mdexx.com/technische-information)

ePLAN / CAD data

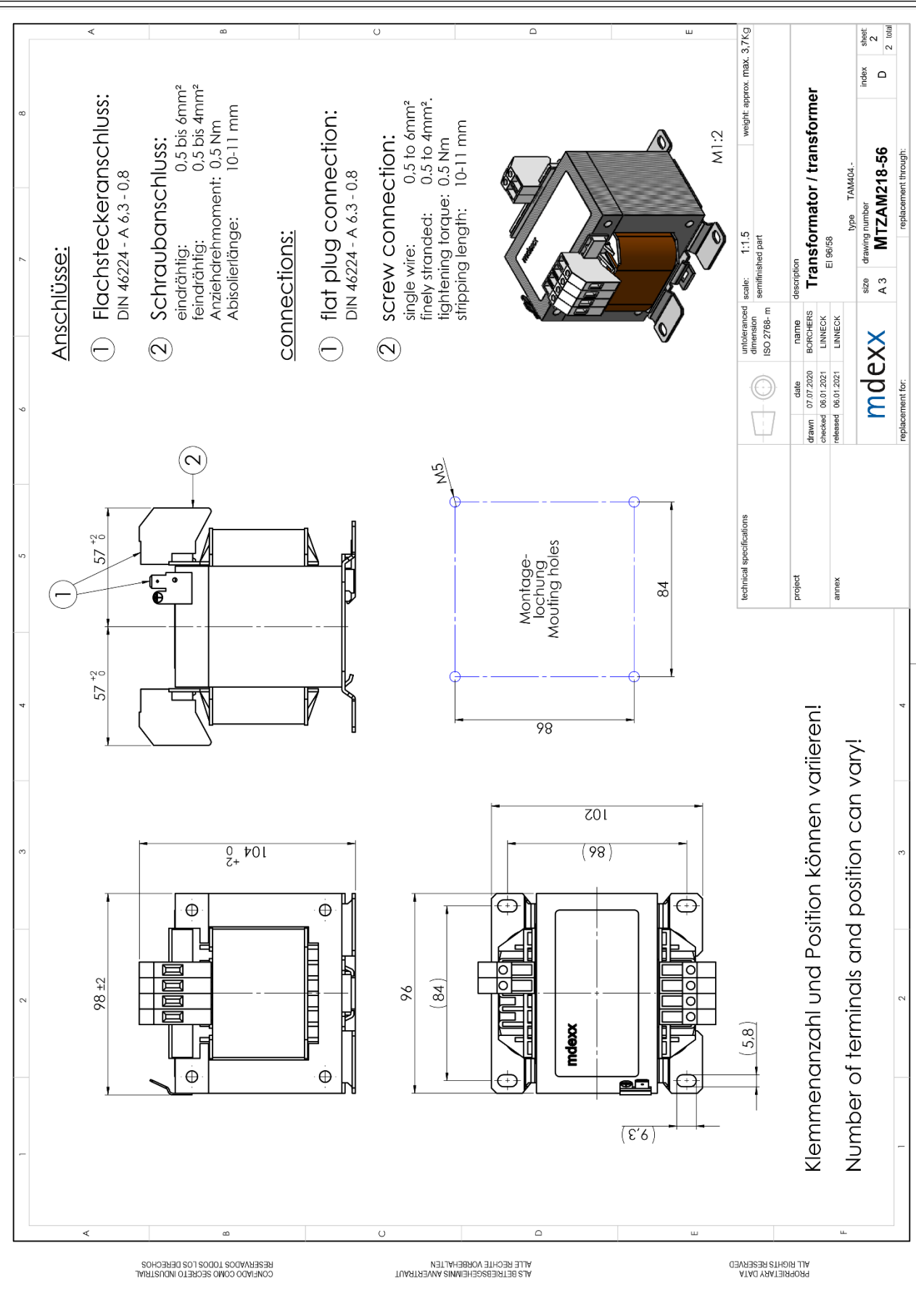
[www.eplandata.de/portal/en\\_EN/part/MDX.TAM4042-8JN00-0EA0](http://www.eplandata.de/portal/en_EN/part/MDX.TAM4042-8JN00-0EA0)

Service / Support

- Operating instruction [www.mdexx.com/BA\\_T\\_Transformatoren\(TAM,TAP,TAT,TAU,TBT,TBU\)](http://www.mdexx.com/BA_T_Transformatoren(TAM,TAP,TAT,TAU,TBT,TBU))
- Certificate [www.mdexx.com/downloads/zertifikate](http://www.mdexx.com/downloads/zertifikate)
- EU Declarations of Conformity [www.mdexx.com/Transformatoren nach EN 61558\(TAM,TAN,TAP,TAT,TAU,TAW\)](http://www.mdexx.com/Transformatoren nach EN 61558(TAM,TAN,TAP,TAT,TAU,TAW))
- EAC Certifications [www.mdexx.com/EAC\\_Transformatoren](http://www.mdexx.com/EAC_Transformatoren)
- UL Certifications
 

US	product	<a href="http://www.mdexx.com/XPTQ2.E92271(TAJ,TAM,TAP,TAW,TEF,TEV)">www.mdexx.com/XPTQ2.E92271(TAJ,TAM,TAP,TAW,TEF,TEV)</a>
	isolation	<a href="http://www.mdexx.com/OBJY2.E106597(CTB130,CTB155,ADS180,CCC180)">www.mdexx.com/OBJY2.E106597(CTB130,CTB155,ADS180,CCC180)</a>
CA	product	<a href="http://www.mdexx.com/XPTQ8.E92271(TAJ,TAM,TAP,TAW,TEF,TEV)">www.mdexx.com/XPTQ8.E92271(TAJ,TAM,TAP,TAW,TEF,TEV)</a>
	isolation	<a href="http://www.mdexx.com/OBJY8.E106597(CTB130,CTB155,ADS180,CCC180)">www.mdexx.com/OBJY8.E106597(CTB130,CTB155,ADS180,CCC180)</a>

# Dimensional drawing

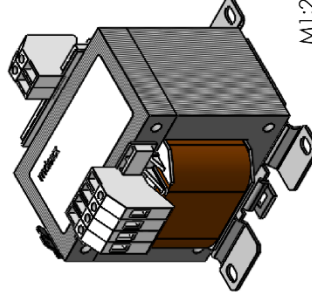


## Anschlüsse:

- ① Flachsteckeranschluss:  
DIN 46224 - A 6.3 - 0.8
- ② Schraubanschluss:  
eindrängig: 0.5 bis 6mm<sup>2</sup>  
feindrängig: 0.5 bis 4mm<sup>2</sup>  
Anziehdrehmoment: 0.5 Nm  
Abisolierlänge: 10-11 mm

## connections:

- ① flat plug connection:  
DIN 46224 - A 6.3 - 0.8
- ② screw connection:  
single wire: 0.5 to 6mm<sup>2</sup>  
finely stranded: 0.5 to 4mm<sup>2</sup>  
tightening torque: 0.5 Nm  
stripping length: 10-11 mm



technical specifications		ISO 2768-m	scale: 1:1.5	weight: approx. max. 3.7Kg
project		name	description	
date	drawn	BORCHERS	Transformer / transformer	
checked	08.01.2021	LINNECK	EI 96/68	
released	08.01.2021	LINNECK	type TAM04-	
annex		size	drawing number	sheet
		A 3	MTZAM218-56	2
			index	D
			replacement through:	2
				2

Klemmenanzahl und Position können variieren!  
Number of terminals and position can vary!