



Output power	500 VA
Input	690 +/-5% V AC
Output	230 V AC
Category	Line, Control circuit und Isolation transformer



Picture representative

Electrical parameters

Phases	1
Nominal power	VA 500
Short-time power	kVA 2,00
Nominal input voltage	V AC 725-690-655
Nominal input current	A AC 0,793-0,832-0,876
Nominal output voltage	V AC 230
Nominal output current	A AC 2,174
Frequency	Hz 50...60
Short circuit voltage	% 4,44 20°C
Vector group	li0
Duty	continuous
Duty cycle	% 100
Winding material	CU
Winding losses	W 23,6
Iron losses	W 23,7
Total losses	W 47,3
Efficiency	% 91,0

Standards

Standards	EN 61558-2-1, -2-2, -2-4
-----------	--------------------------

Authorization / Certificate

Approvals	ENE (further approvals possible on customer request)
Declaration of Conformity	CE

Environmental conditions

Operating temperature	°C	-25 ... +40
Storage temperature	°C	-25 ... +55
Extended temperature range	°C	up to +80 (after power reduction according to the load characteristics)



Relative humidity (without condensation)	%	5 ... 95
Cooling		natural cooling
Installation altitude		to 1000m above sea level, higher altitude possible with power reduction
Overvoltage category	(acc. EN 61558)	OVC III
Degree of pollution	(acc. EN 61558)	P2

Installation and mounting

Type of terminals	Screw / tab connection
Mounting type	Screw
Mounting position	see „Dimensional drawing“ at the end of the document
Dimensions (HxWxD)	see „Dimensional drawing“ at the end of the document
Mounting dimensions	see „Dimensional drawing“ at the end of the document
Oblong hole	see „Dimensional drawing“ at the end of the document
Clearance distance	see technical information in the chapter „Further information“

Security features

Insulation class	acc. EN	class B
Protection		IP00 (other types of protection on request)
Protection class		
Short-circuit strength		conditionally with protection

Connection table



Terminal block

Back side: 32-31
Front side: 1-2-3-4

	U_N [V AC]	I_N [A AC]	Terminals $\circ \circ$	Wiring $\overline{\circ \circ}$	Protection
PRI1	725	0,793	1-4	-	3RV2411-0KA10 / 0,9A (ext.)
	690	0,832	1-3	-	3RV2411-0KA10 / 1,0A (ext.)
	655	0,876	1-2	-	3RV2411-0KA10 / 1,0A (ext.)
SEC1	230	2,174	31-32	-	3RV2011-1CA10 / 2,2A (ext.)



NOTE protection

Protection acc. IEC 60947 | Type suggestion with Siemens circuit breaker - alternatives are possible.
Protection for the North American market acc. UL - see chapter „Further information“.

General data

GTIN / EAN	4025515525189
Country of origin	Czech Republic
Packaging unit	1
Export sign	AL: N / ECCN: N
Customs tariff number	85043180
Gross weight - brutto	kg 7,2
Net weight - netto	kg 6,9

Further information

Complete catalogue Transformers / Power Supplies / Reactors / Filters

www.mdexx.com/online-katalog

Core product range Transformers

www.mdexx.com/core-products-range-transformers

Technical information

www.mdexx.com/technische-information

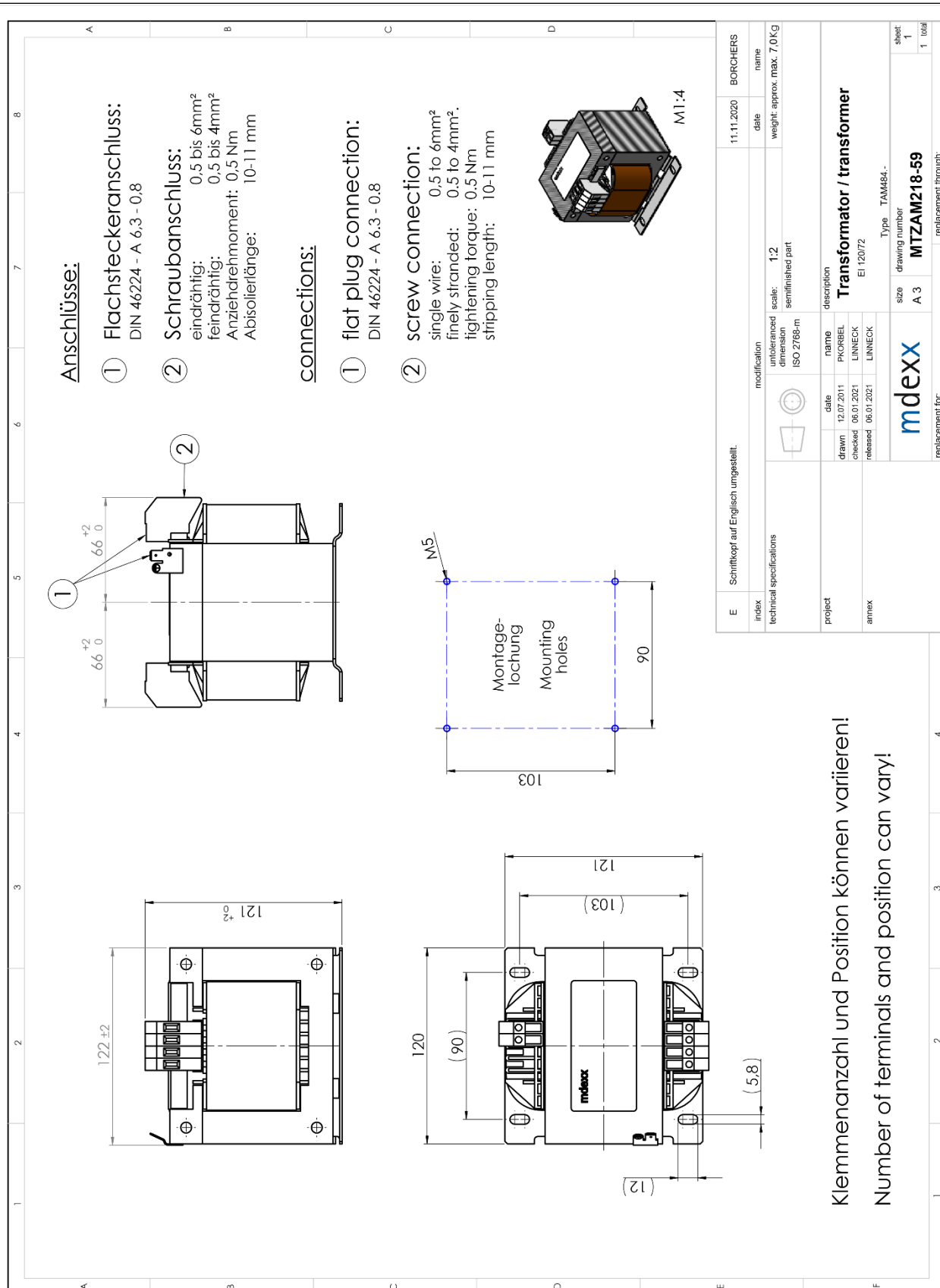
ePLAN / CAD data

www.eplandata.de/portal/en_EN/part/MDX.TAM4842-5MT10-0FA0

Service / Support

- Operating instruction [www.mdexx.com/BA_T_Transformatoren\(TAM,TAP,TAT,TAU,TBT,TBU\)](http://www.mdexx.com/BA_T_Transformatoren(TAM,TAP,TAT,TAU,TBT,TBU))
- Certificate www.mdexx.com/downloads/zertifikate
- EU Declarations of Conformity [www.mdexx.com/Transformatoren nach EN 61558\(TAM,TAN,TAP,TAT,TAU,TAW\)](http://www.mdexx.com/Transformatoren nach EN 61558(TAM,TAN,TAP,TAT,TAU,TAW))
- EAC Certifications www.mdexx.com/EAC_Transformatoren

Dimensional drawing

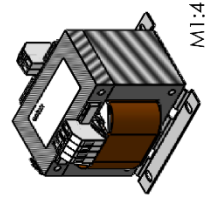


Anschlüsse:

- ① **Flachsteckeranschluss:**
DIN 46224 - A 6.3 - 0.8
- ② **Schraubanschluss:**
eindrähtig: 0.5 bis 6mm²
feindrähtig: 0.5 bis 4mm²
Anziehdrehmoment: 0.5 Nm
Absolierlänge: 10-11 mm

connections:

- ① **flat plug connection:**
DIN 46224 - A 6.3 - 0.8
- ② **screw connection:**
single wire: 0.5 to 6mm²
finely stranded: 0.5 to 4mm²
tightening torque: 0.5 Nm
stripping length: 10-11 mm



index	E	Schriftkopf auf Englisch umgestellt.	modification	ISO 2768-m	scale:	1:2	name	BORCHERS	date	11.11.2020	weight: approx. max. 7.0KG	
	technical specifications	unintoleranced dimension		semifinished part		name		name				
project	description											
	Transformer / transformer											
	EI 120/72											
annex	drawn	12.07.2011	name	PROBELL	size	A 3	drawing number	MTZAM218-59	sheet	1	total	1
	checked	06.01.2021	name	LINNECK	release	06.01.2021	name	LINNECK	replacement for:			

Klemmenzahl und Position können variieren!
Number of terminals and position can vary!