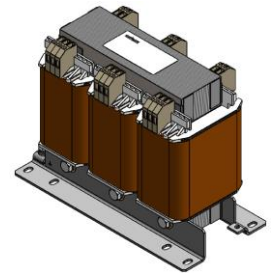




Output power	1,00 kVA
Input	Y500-440-380+/-20/D289-254-220+/-11 V AC
Output	Y 400 / D 230 V AC
Category	Line, Control circuit und Isolation transformer



Picture representative

Electrical parameters

Phases	3
Nominal power	kVA 1,00
Short-time power	kVA 3,50
Nominal input voltage	V AC 520-500-480-460-440-420-400-380-360-300-289-277-266-254-240-230-220-208
Nominal input current	A AC 1,19-1,24-1,29-1,35-1,41-1,48-1,55-1,63-1,72-2,07-2,15-2,24-2,33-2,44-2,58-2,70-2,82-2,98
Nominal output voltage	V AC 400-230
Nominal output current	A AC 1,44-2,50
Frequency	Hz 50...60
Short circuit voltage	% 5,64 20°C
Vector group	IIIiii0
Duty	continuous
Duty cycle	% 100
Winding material	CU
Winding losses	W 70,0
Iron losses	W 11,5
Total losses	W 81,5
Efficiency	% 92,0

Standards

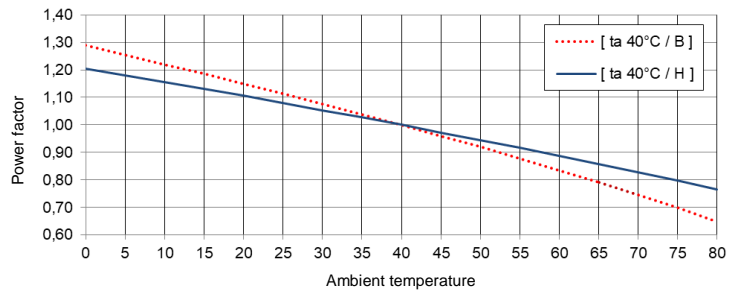
Standards	EN 61558-2-1, -2-2, -2-4 UL 5085 / XPTQ2-8.E92271
-----------	------------------------------------------------------

Authorization / Certificate

Approvals	ENEC cULus (further approvals possible on customer request)
Declaration of Conformity	CE

Environmental conditions

Operating temperature	°C	-25 ... +40
Storage temperature	°C	-25 ... +55
Extended temperature range	°C	up to +80 (after power reduction according to the load characteristics)



Relative humidity (without condensation)	%	5 ... 95
Cooling		natural cooling
Installation altitude		to 1000m above sea level, higher altitude possible with power reduction
Overvoltage category	(acc. EN 61558)	OVC III
Degree of pollution	(acc. EN 61558)	P2

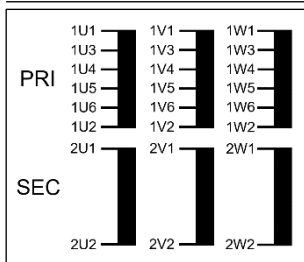
Installation and mounting

Type of terminals	Screw / tab connection
Mounting type	Screw
Mounting position	see „Dimensional drawing“ at the end of the document
Dimensions (HxWxD)	see „Dimensional drawing“ at the end of the document
Mounting dimensions	see „Dimensional drawing“ at the end of the document
Oblong hole	see „Dimensional drawing“ at the end of the document
Clearance distance	see technical information in the chapter „Further information“

Security features

Insulation class	acc. EN	class B
Insulation class	acc. UL	CLASS 130
Protection		IP00 (other types of protection on request)
Protection class		I
Short-circuit strength		conditionally with protection

Connection table



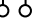
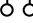
Terminal block

Back side:

2U1-2U2-2V1-2V2-2W1-2W2

Front side:

1U1-1U3-1U4-1U5-1U6-1U2-1V1-1V3-1V4-1V5-1V6-1V2-1W1-1W3-1W4-1W5-1W6-1W2

	U _N [V AC]	I _N [A AC]	Terminals 	Wiring 	Protection
PRI1	520	1,19	1U1-1V1-1W1	1U2-1V2-1W2	3RV2411-1AA10 / 1,3A (ext.)
	500	1,24	1U1-1V1-1W1	1U6-1V6-1W6	3RV2411-1AA10 / 1,4A (ext.)
	480	1,29	1U1-1V1-1W1	1U5-1V5-1W5	3RV2411-1AA10 / 1,5A (ext.)
	460	1,35	1U3-1V3-1W3	1U2-1V2-1W2	3RV2411-1BA10 / 1,5A (ext.)
	440	1,41	1U3-1V3-1W3	1U6-1V6-1W6	3RV2411-1BA10 / 1,6A (ext.)
	420	1,48	1U3-1V3-1W3	1U5-1V5-1W5	3RV2411-1BA10 / 1,7A (ext.)
	400	1,55	1U4-1V4-1W4	1U2-1V2-1W2	3RV2411-1BA10 / 1,8A (ext.)
	380	1,63	1U4-1V4-1W4	1U6-1V6-1W6	3RV2411-1BA10 / 1,9A (ext.)
	360	1,72	1U4-1V4-1W4	1U5-1V5-1W5	3RV2411-1CA10 / 2,1A (ext.)
	300	2,07	1U1-1V1-1W1	1U2-1V1 1V2-1W1 1W2-1U1	3RV2411-1DA10 / 2,4A (ext.)
	289	2,15	1U1-1V1-1W1	1U6-1V1 1V6-1W1 1W6-1U1	3RV2411-1DA10 / 2,5A (ext.)
	277	2,24	1U1-1V1-1W1	1U5-1V1 1V5-1W1 1W5-1U1	3RV2411-1DA10 / 2,6A (ext.)
	266	2,33	1U3-1V3-1W3	1U2-1V3 1V2-1W3 1W2-1U3	3RV2411-1DA10 / 2,7A (ext.)
	254	2,44	1U3-1V3-1W3	1U6-1V3 1V6-1W3 1W6-1U3	3RV2411-1DA10 / 2,8A (ext.)
	240	2,58	1U3-1V3-1W3	1U5-1V3 1V5-1W3 1W5-1U3	3RV2411-1EA10 / 2,9A (ext.)
	230	2,70	1U4-1V4-1W4	1U2-1V4 1V2-1W4 1W2-1U4	3RV2411-1EA10 / 3,1A (ext.)
220	2,82	1U4-1V4-1W4	1U6-1V4 1V6-1W4 1W6-1U4	3RV2411-1EA10 / 3,2A (ext.)	
208	2,98	1U4-1V4-1W4	1U5-1V4 1V5-1W4 1W5-1U4	3RV2411-1EA10 / 3,4A (ext.)	
SEC1	400	1,44	2U1-2V1-2W1	2U2-2V2-2W2	3RV1011-1BA10 / 1,7A (ext.)
	230	2,50	2U1-2V1-2W1	2U2-2V1 2V2-2W1 2W2-2U1	3RV1011-1DA10 / 3,0A (ext.)



NOTE protection

Protection acc. IEC 60947 | Type suggestion with Siemens circuit breaker - alternatives are possible.
Protection for the North American market acc. UL - see chapter „Further information“.

General data

GTIN / EAN	4025515532019
Country of origin	Czech Republic
Packaging unit	1
Export sign	AL: N / ECCN: N
Customs tariff number	85043200
Gross weight - brutto	kg 10,9
Net weight - netto	kg 10,4

Further information

Complete catalogue Transformers / Power Supplies / Reactors / Filters


www.mdexx.com/online-katalog

Core product range Transformers

www.mdexx.com/core-products-range-transformers

Technical information

www.mdexx.com/technische-information

 EPLAN / CAD data

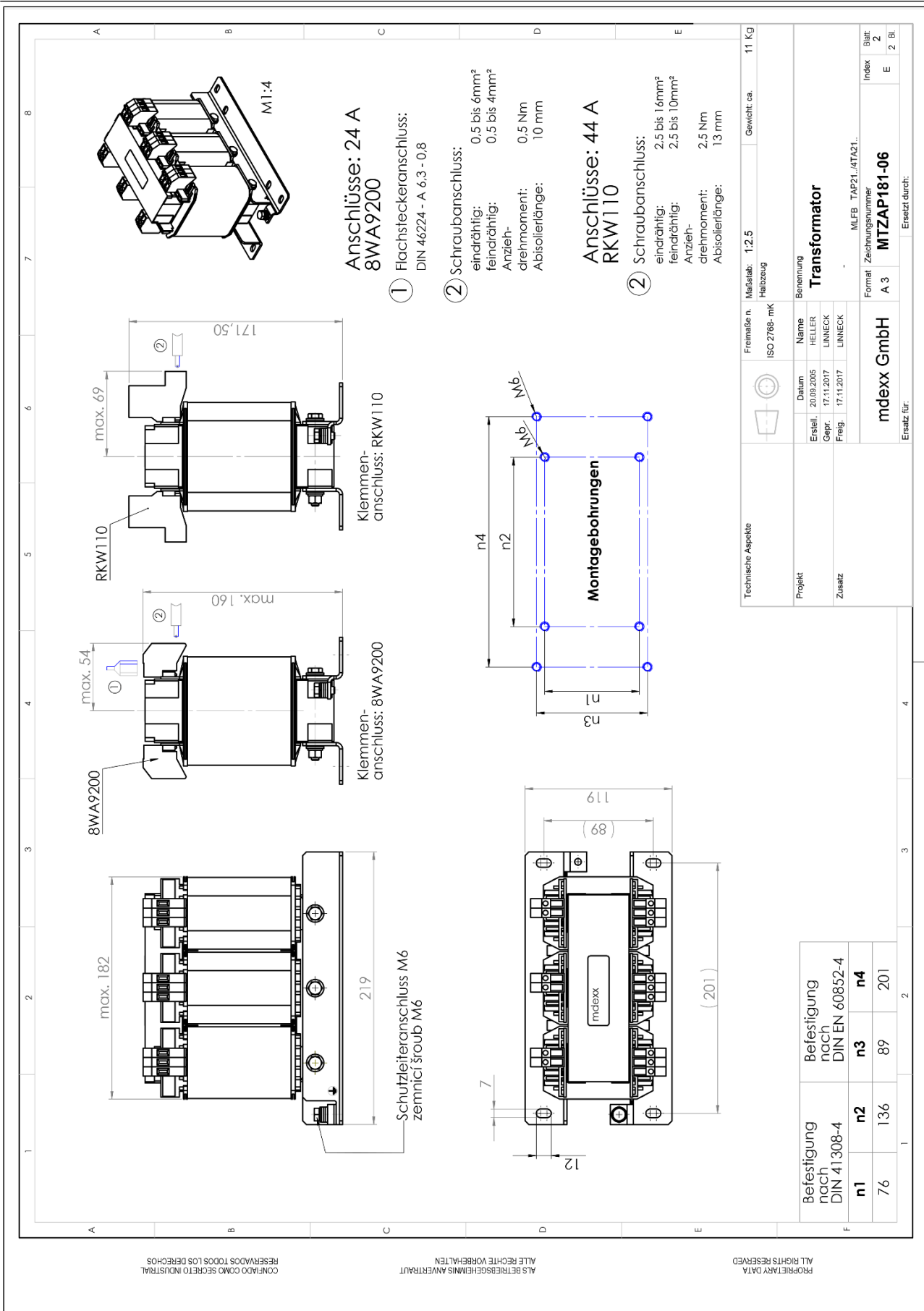
www.eplandata.de/portal/en_EN/part/MDX.TAP2142-8CC40-0HA0

Service / Support

- Operating instruction [www.mdexx.com/BA_T_Transformatoren \(TAM, TAP, TAT, TAU, TBT, TBU\)](http://www.mdexx.com/BA_T_Transformatoren_(TAM,_TAP,_TAT,_TAU,_TBT,_TBU))
- Certificate www.mdexx.com/downloads/zertifikate
- EU Declarations of Conformity [www.mdexx.com/Transformatoren nach EN 61558 \(TAM, TAN, TAP, TAT, TAU, TAW\)](http://www.mdexx.com/Transformatoren_nach_EN_61558_(TAM,_TAN,_TAP,_TAT,_TAU,_TAW))
- EAC Certifications [www.mdexx.com/EAC Transformatoren](http://www.mdexx.com/EAC_Transformatoren)
- UL Certifications

US	<i>product</i>	www.mdexx.com/XPTQ2.E92271 (TAJ, TAM, TAP, TAW, TEF, TEV)
	<i>isolation</i>	www.mdexx.com/OBJY2.E106597 (CTB130, CTB155, ADS180, CCC180)
CA	<i>product</i>	www.mdexx.com/XPTQ8.E92271 (TAJ, TAM, TAP, TAW, TEF, TEV)
	<i>isolation</i>	www.mdexx.com/OBJY8.E106597 (CTB130, CTB155, ADS180, CCC180)

Dimensional drawing



Technische Aspekte		Freimaße n. Maßstab: 1:2,5 ISO 2768 - mK Halbzeug		Gewicht: ca. 11 KG	
Projekt		Benennung		Transformator	
Datum		Name		MLFB, TAP21...ATA21..	
Ersell.		HELLER		Index Blatt	
Gepr.		LINNECK		E 2	
Freig.		LINNECK		Bl. 2	
Zusatz		Format: Zeichnungsnummer		Index	
mdexx GmbH		A 3		E	
Ersatz für:		MITZAP181-06		E	
Ersatz durch:				Bl. 2	

Befestigung nach DIN 41308-4	n1	76	n2	136	n3	89	n4	201
------------------------------	----	----	----	-----	----	----	----	-----